

# BALLENISLES POD 16A

A PARCEL OF LAND LYING IN THE SOUTHWEST QUARTER OF  
SECTION 14, TOWNSHIP 42 SOUTH, RANGE 42 EAST, CITY OF PALM BEACH GARDENS, PALM BEACH COUNTY, FLORIDA  
SHEET 2 OF 2  
SEPTEMBER 2001

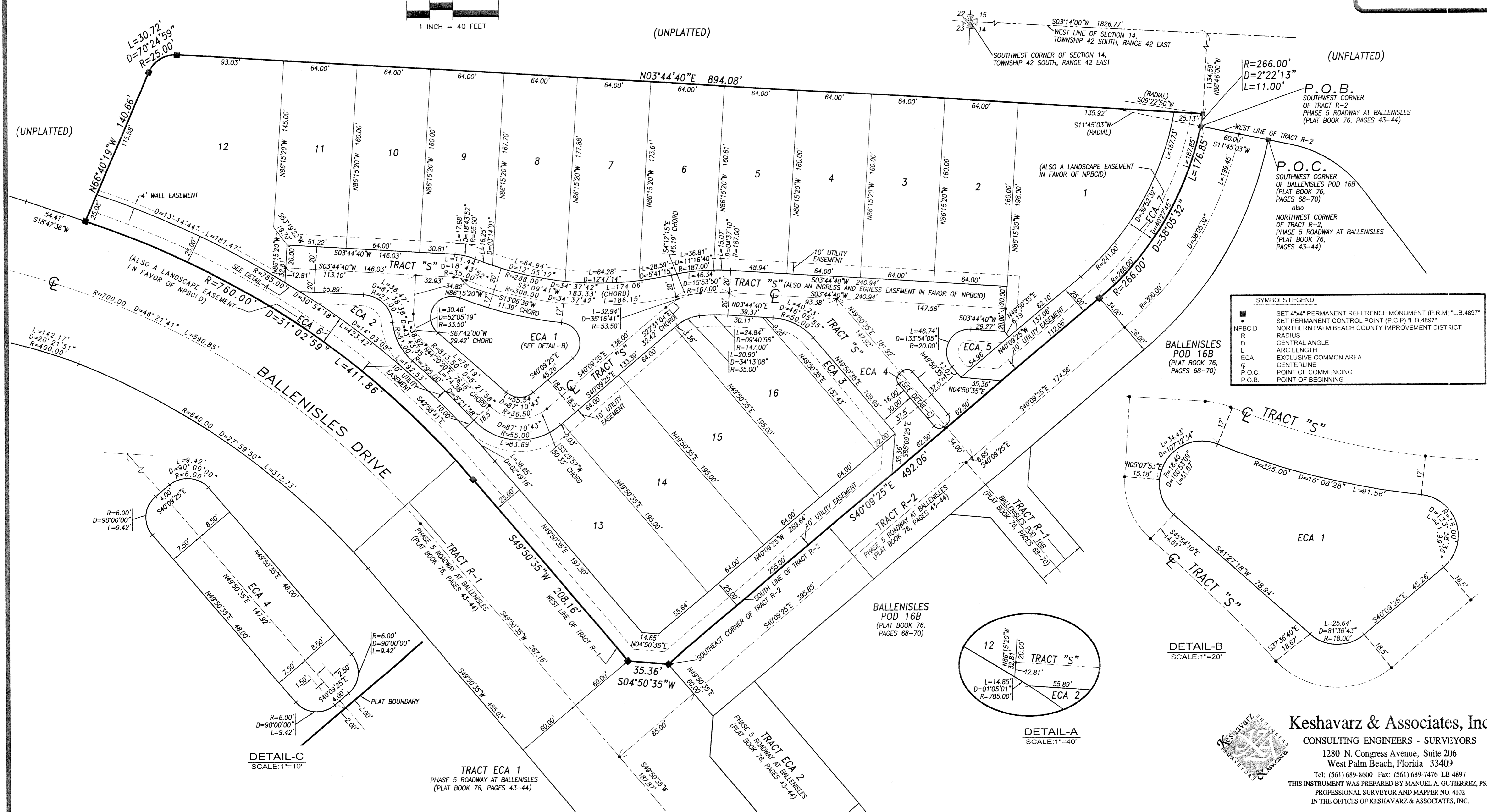
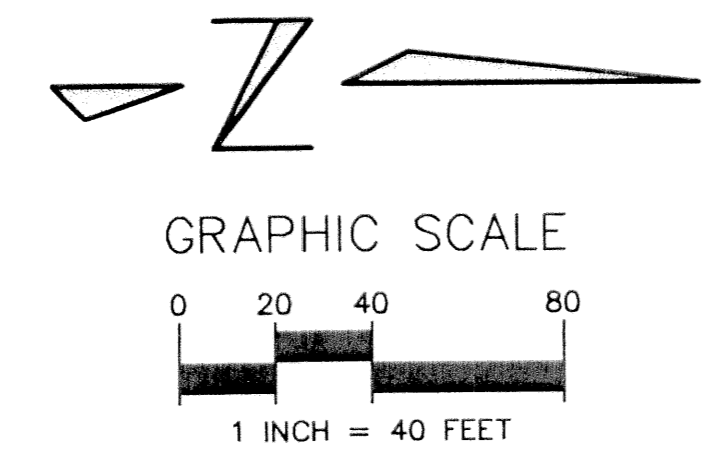
STATE OF FLORIDA  
COUNTY OF PALM BEACH

THIS PLAT WAS FILED FOR RECORD AT \_\_\_\_\_ THIS \_\_\_\_\_ DAY OF \_\_\_\_\_ A.D. 2001, AND DULY RECORDED IN PLAT BOOK \_\_\_\_\_ ON PAGES \_\_\_\_\_ AND \_\_\_\_\_

DOROTHY WILKEN, CLERK  
CIRCUIT COURT,

BY: \_\_\_\_\_ DC

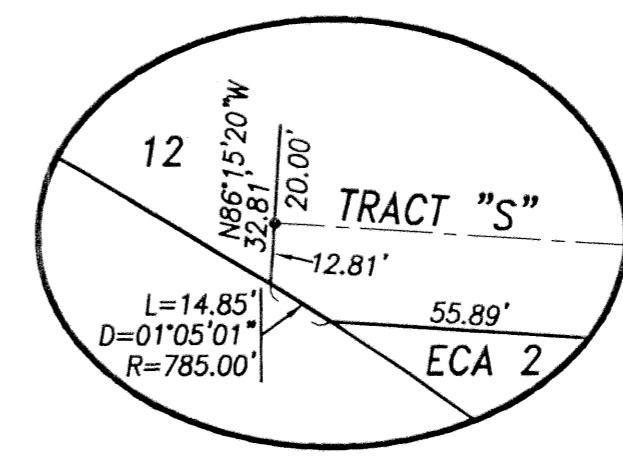
# 137



**SYMBOLS LEGEND**

●	SET 4"x4" PERMANENT REFERENCE MONUMENT (P.R.M.) "L.B. 4897"
○	SET PERMANENT CONTROL POINT (P.C.P.) "L.B. 4897"
NPBCID	NORTHERN PALM BEACH COUNTY IMPROVEMENT DISTRICT
R	RADIUS
D	CENTRAL ANGLE
L	ARC LENGTH
ECA	EXCLUSIVE COMMON AREA
C	CENTERLINE
P.O.C.	POINT OF COMMENCING
P.O.B.	POINT OF BEGINNING

**BALLENISLES  
POD 16B  
(PLAT BOOK 76,  
PAGES 68-70)**



**DETAIL-B  
SCALE: 1"=20'**

**DETAIL-C  
SCALE: 1"=10'**

**TRACT ECA 1  
PHASE 5 ROADWAY AT BALLENISLES  
(PLAT BOOK 76, PAGES 43-44)**

**BALLENISLES  
POD 16B  
(PLAT BOOK 76,  
PAGES 68-70)**



**Keshavarz & Associates, Inc.**  
CONSULTING ENGINEERS - SURVEYORS  
1280 N. Congress Avenue, Suite 206  
West Palm Beach, Florida 33409  
Tel: (561) 689-8600 Fax: (561) 689-7476 LB 4897  
THIS INSTRUMENT WAS PREPARED BY MANUEL A. GUTIERREZ, PSM  
PROFESSIONAL SURVEYOR AND MAPPER NO. 4102  
IN THE OFFICES OF KESHAVARZ & ASSOCIATES, INC.